

CREDIT and CC

Version 3.5

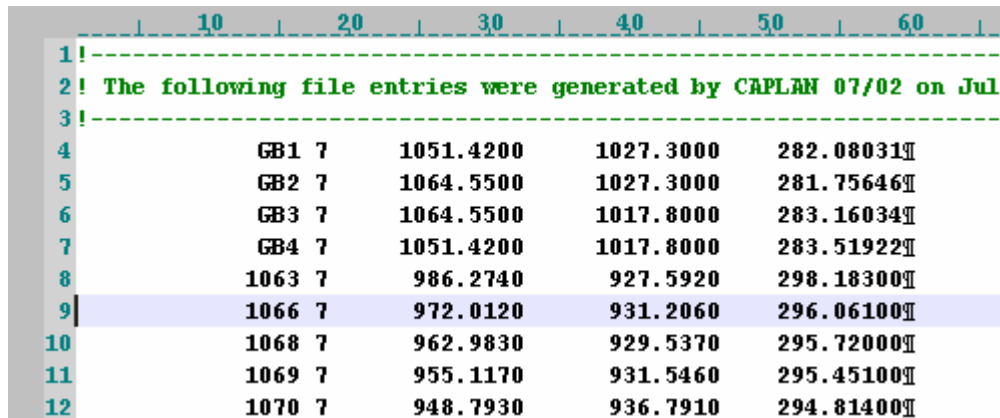
July 2009

Line and Column Display

Many of our users have requested improvements to the

and some have referred to the widely used American editing program UltraEdit. We have therefore taken a closer look at UltraEdit and discovered a few interesting functions that are now also available in the latest version of CREDIT.

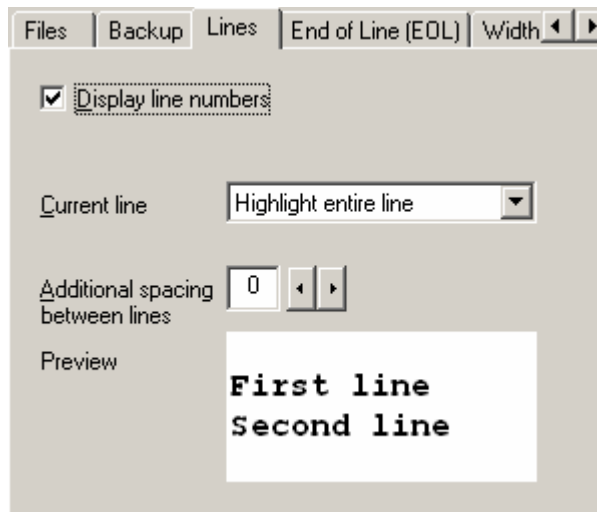
In CREDIT it is now possible to directly display line numbers and also to highlight the current input line in color:



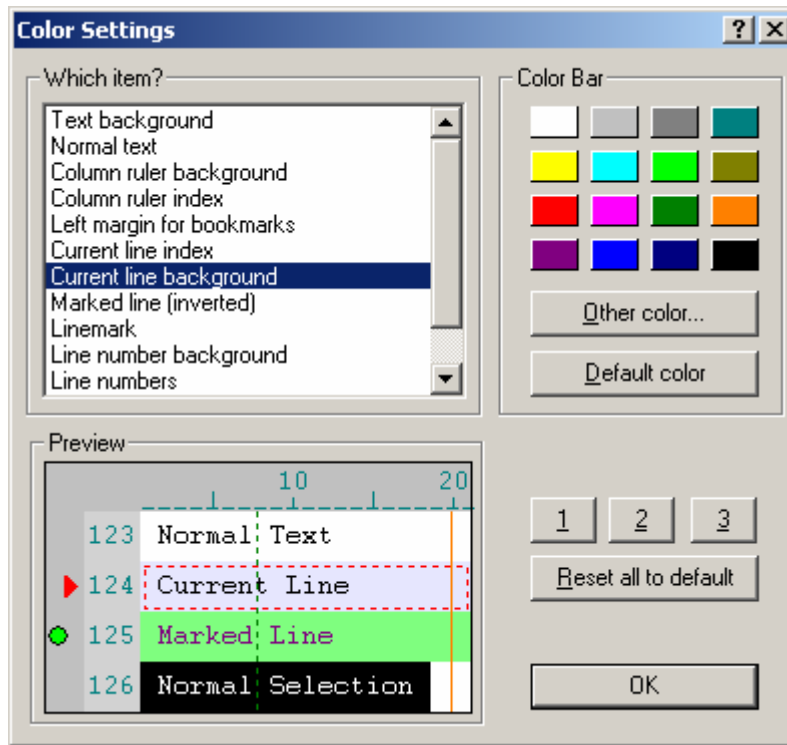
The screenshot shows a text editor window with a ruler at the top marked from 10 to 60. The text content is as follows:

```
1 |-----|-----|-----|-----|-----|-----|
2 | The following file entries were generated by CAPLAN 07/02 on Jul
3 |-----|-----|-----|-----|-----|-----|
4 |          GB1 7      1051.4200      1027.3000      282.08031
5 |          GB2 7      1064.5500      1027.3000      281.75646
6 |          GB3 7      1064.5500      1017.8000      283.16034
7 |          GB4 7      1051.4200      1017.8000      283.51922
8 |          1063 7      986.2740       927.5920      298.18300
9 |          1066 7      972.0120       931.2060      296.06100
10 |         1068 7      962.9830       929.5370      295.72000
11 |         1069 7      955.1170       931.5460      295.45100
12 |         1070 7      948.7930       936.7910      294.81400
```

The settings for this can be found on the “Lines” tab in the dialog accessed via “Settings / General...“:



If you are not happy with the default colors then you can access the advanced dialog via "Settings / Color..." and assign the desired colors there:





new functions

Appending text to the Clipboard:



Some

have also been implemented in CREDIT and CC, and in this respect we have been influenced by your requests and also the UltraEdit functionality. The most important new feature is the possibility of

As you most probably already know, marked text segments are placed on the Clipboard using the following operations:

	Ctrl+X	Cut
	Ctrl+C	Copy
	Ctrl+Shift+X	Cut marked lines
	Ctrl+Shift+C	Copy marked lines

All these operations overwrite the existing contents of the Clipboard when the new text is inserted i.e. appending text to the Clipboard was previously not possible. But this is now possible in CREDIT version 3.5 using the following new functions:

	Ctrl+Alt+X	Cut +
	Ctrl+Alt+C	Copy +
	Ctrl+Alt+Shift+X	Cut marked lines +
	Ctrl+Alt+Shift+C	Copy marked lines +

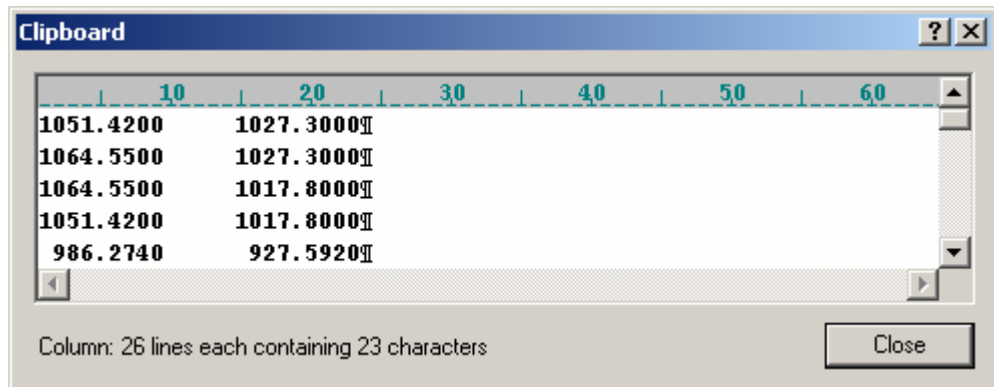
As can be seen, the difference is made by pressing the Alt key. The new commands are marked in the menus with the addition of a plus (+) symbol, which implies that these operations add / append something.

Appending items to the Clipboard is not always possible. For example, continuous, wrapped text in the Clipboard cannot have a text column appended to it. Similarly, a text column in the Clipboard can only have columns appended to it, and it should also be noted in such cases that the column being appended must have the same width as the existing column.

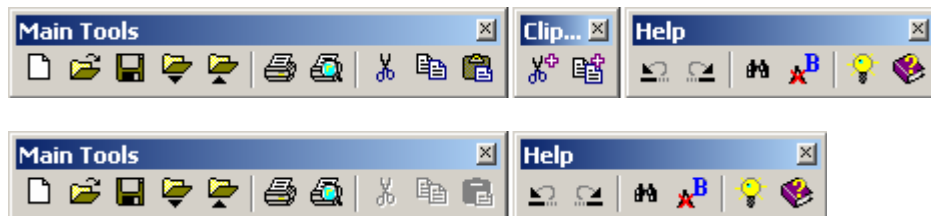
In order to help you check the current

*contents
of the
Clipboard*

we have also created the new "Window / Clipboard..." function:



Note: if you think that you don't really need the new functions for appending text to the Clipboard then you may feel that the two new function buttons purely take up space and get in the way rather than providing enrichment. We have therefore put the two buttons in their own toolbar field, which is easy to hide by simply pressing the "Close" button in the top right hand corner of the middle field. The two remaining fields then move to close the gap left by the hidden field:



Goto matching bracket

This new function makes it possible to jump straight from one opening bracket to the corresponding closing bracket on the same level. Furthermore, if you are currently located at the closing bracket then it is possible to move directly back to the opening bracket with this function. The following pairs of bracket each form a group:

()	Round bracket
[]	Square bracket
{ }	Curly bracket
< >	Angle bracket

In each group there are multiple levels in existence when multiple brackets are used for opening and closing. In the following configuration, for example,

```
( 1  ( 2  ( 3          ) 4  ( 5  ) 6  ) 7          ) 8
```

brackets 2 and 7 are partners. Therefore, if you are positioned on bracket 2 and call the command "Edit / Goto Matching Bracket" or press the key combination Ctrl+B, the cursor will move to bracket 7. Conversely, if you are positioned on bracket 7, the same command moves the cursor to bracket 2.

Select between matching brackets

Selecting text between two partner brackets can be done using the command "Edit / Select until Bracket" or with the key combination Ctrl+Alt+B. The function acts somewhat differently depending on if it is invoked from the opening or the closing bracket:

Invoked from the opening bracket:

```

          ----->
( 1  ( 2  ( 3  ) 4  ) 5  ) 6  ) 7  ) 8

```

Invoked from the closing bracket:

```

<-----
( 1  ( 2  ( 3  ) 4  ) 5  ) 6  ) 7  ) 8

```

In the first case the opening and closing brackets are both included in the marked area, but in the second case they are excluded.

Direct ASCII input using Alt+Code

As you may well already know, the extended ASCII character set contains 256 characters, which are represented by the codes 0 to 255. The code of the current character is displayed in the status bar in the bottom right corner of the CREDIT window:

Line 5	Col 25	Code 48	INS	Page 1	4 Lines
--------	--------	---------	-----	--------	---------

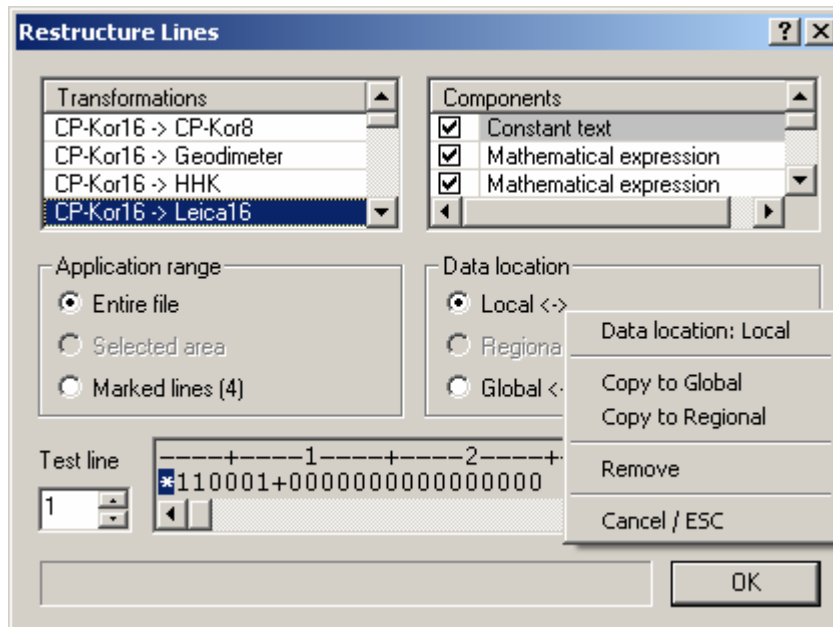
However, keyboard entry is somewhat limited for these characters, so until now one has had to go via the dialogs accessed using “Extras / Binary Character...” or “Extras / Extended ASCII...” in order to enter a binary character or a character from the extended ASCII set. CREDIT now makes it possible to enter any ASCII code by simply entering its code (assuming you know the code number of course). Just hold down the Alt key and enter the relevant code number.

Restructure Lines

data location

The

dialog has also been the site of a number of enhancements. The often expressed wish to be able to make a painstakingly created restructuring operation available to a group of colleagues can be realized by means of the by placing the DAT directory on a network server to which the colleagues also have access. There is a quickinfo tooltip for each data location which shows where the data location can be found. The data location can be modified via the context menu:



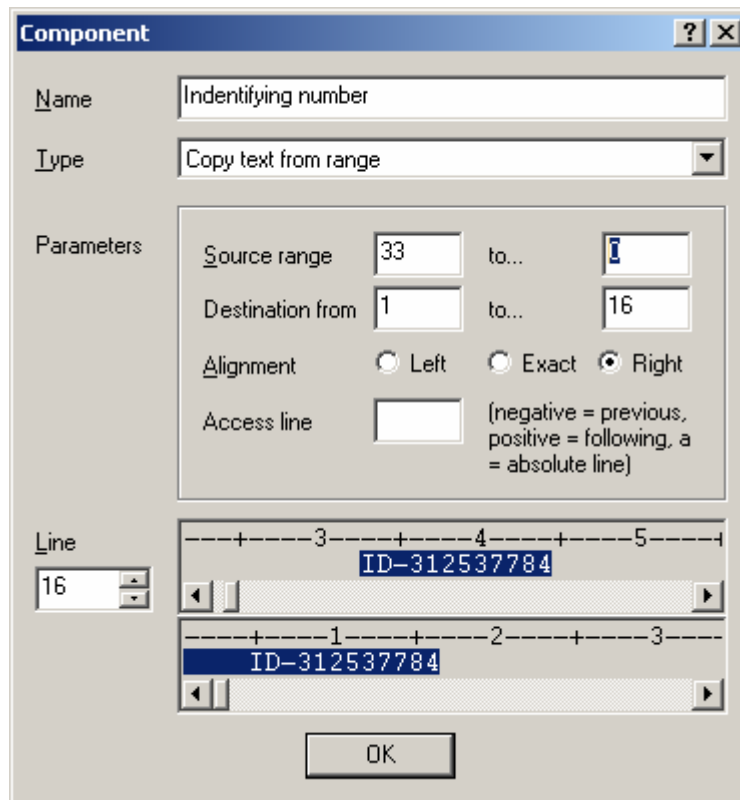
This principle has been implemented wherever data locations are used e.g. for the background coloration methods and the syntax coloring.

Range [from-0]

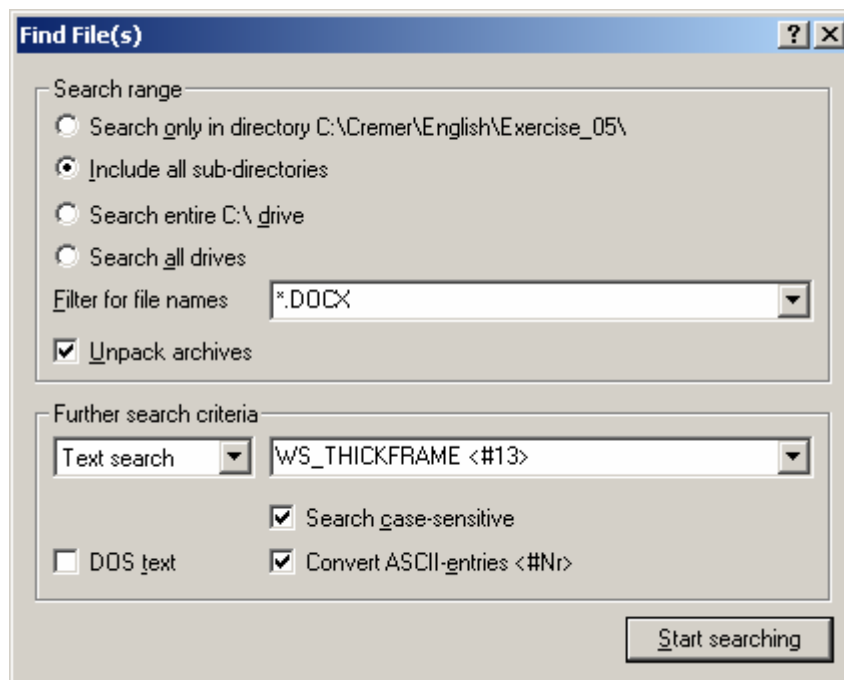
This new feature is also not limited in application to the “Restructure Lines” function, but can be used wherever a column range can be stated in the form [from-to]. The use of zero (0) instead of a fixed upper limit (to) means that the range stretches until the end of the respective line.

Naming and selecting components

The transformations used for restructuring often consist of numerous components and it is not always easy to retain a good overview of these. Components can thus be excluded from the preview by removing the selection check mark from the list. Furthermore, it is possible to individually name each component, which makes identification easier.



Find files The function has also been enhanced, and is available in the CREDIT open dialog and in the CC directory windows:



Unpack archives

The

option is also new in the file search function. Until now, archive files (e.g. ZIP or DOCX files) have not been unpacked (decompressed) and examined during searches. Now, the new option results in files with the following name extensions

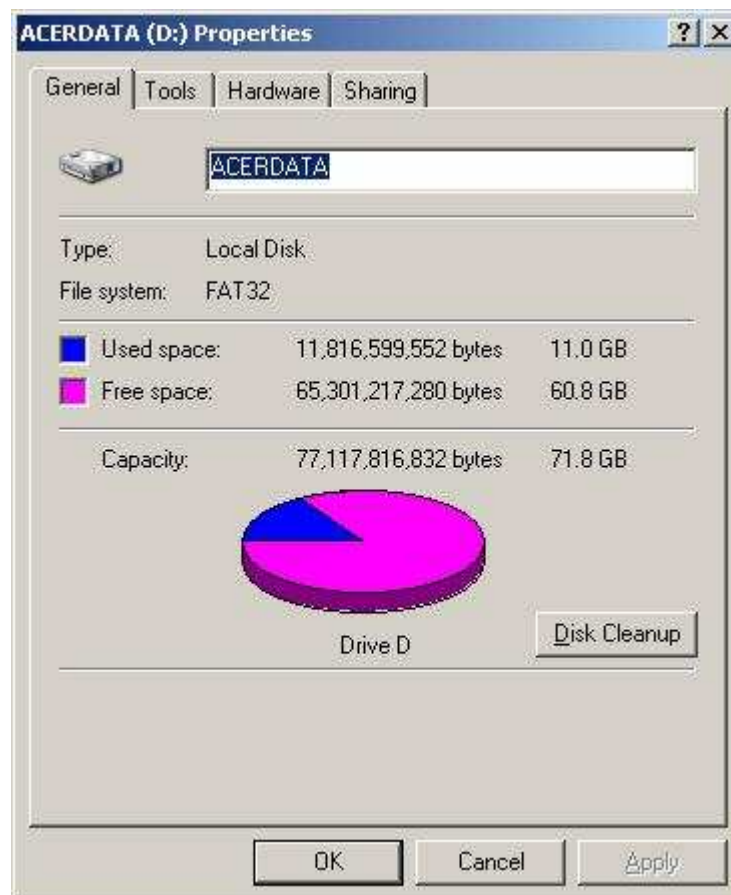
.ZIP	(zipped archive)
.CPZ	(zipped CAPLAN project for transfer)
.MFZ	(zipped CAPLAN plans for transfer)
.DOCX	(MS Word document from MS Office 2005 or newer)
.XLSX	(MS EXCEL data from Office 2005 or newer)

being automatically unpacked and searched for the relevant text. Nested archive files are also completely unpacked and searched through. The results list detailing the files found contains the name of the archive file (as the unpacked files are deleted as soon as they have been searched, and the originals remain in the archive file) as well as a quickinfo tooltip indicating the actual file in which the text is contained. With nested archive files one simply follows the arrows, as shown below:

In archive: Sub3\Sub\Archiv.zip -> gez-003.docx -> MS Word Document

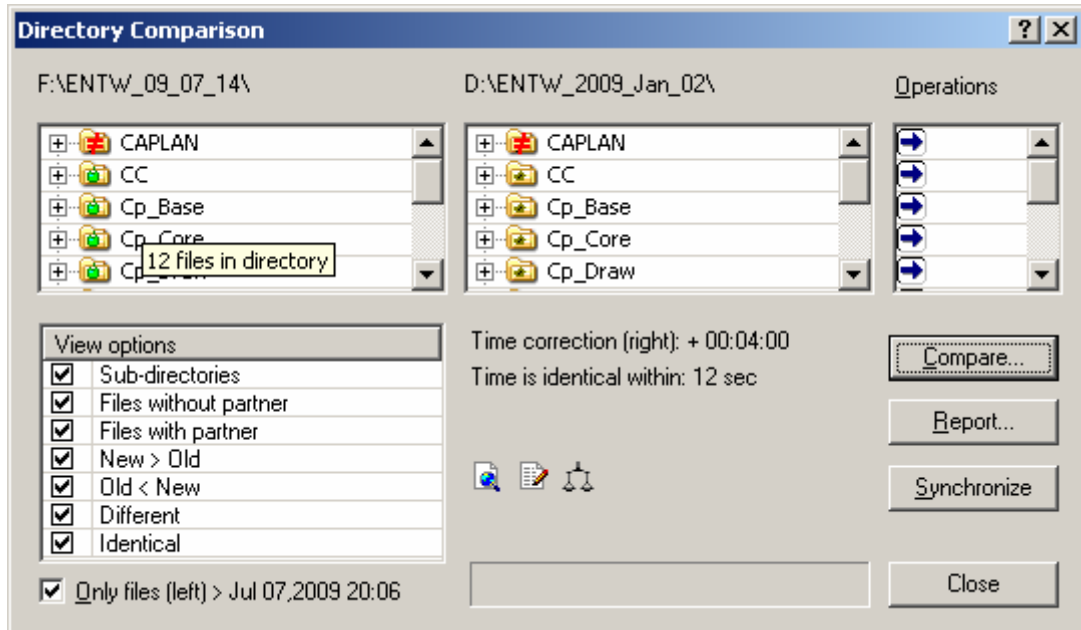
Directory Properties

This enhancement is also available in the open file dialog as well as in the CC directory windows. By selecting the relevant command in the context menu for a sub-directory it is possible to view the properties for this directory. If the sub-directory is a complete drive then the memory capacity and usage is displayed:



Directory

Comparison The directory comparison in CC has been the subject of an array of enhancements. All the *settings* (such a time correction, tolerance etc.) are now displayed in the dialog and are persistently saved when the dialog is closed. When the dialog is next called the most recent settings are loaded and used for the initial comparison.



Only files (left) > time

The view option called

is also new. The left hand directory generally contains the latest situation and the user also usually knows from what point in time the relevant modifications could have occurred. With this information, the user can significantly reduce the number of files in the comparison, as the only files shown on the left hand side will be those that are newer than the time stated in the “Compare” dialog.

Depending on the view options selected, the sub-directories can contain variable numbers of files (and sometimes no files). The number of files is now displayed with a quickinfo tooltip.

Synchronization

Previously in a synchronization, if files were deleted so that a sub-directory was completely emptied, the sub-directory itself was also deleted. Now there is an option available to influence this functionality.

We would be very pleased if the new features in this latest CREDIT version again manage to fulfill yet more of your wishes. Michael Eicher and Konrad Cremer will be available at the INTERGEO trade fair in Karlsruhe and would be happy to discuss any questions you may have there.

Pfaffenhofen, July 20, 2009
The entire Cremer team